



ETHIRAJ
CONSTRUCTION PRIVATE LIMITED



ABOUT US

M/S Ethiraj Construction Private Limited (ECPL) is Govt. approved Class A Category Company .

M/S Ethiraj Construction Private Limited (ECPL) was established back in 2020-21 & was progressed steadily in the areas of undertaking Civil Industrial Projects & Plant Maintenance. The company never looked back since then & today established itself as an organization of repute amongst Govt. Departments & Private Sectors.

M/S ECPL has a strong team of engineers and supporting personnel with a dedicated workforce & all the Road Construction Equipments. ECPL having its own Asphalt Batch Mix Plant 100 TPH with all accessories.

For the success of any project, the three vital aspects are “Quality, Coordination and Time Schedule”. At ECPL these services are executed by highly qualified and efficient project team who with their in-depth experience can take up any sophisticated and time-bound project in most competitive manner.

ECPL today with its vast expanded market base can execute any sophisticated and time-bound project with higher efficiency maintaining the quality of works

The company is fully equipped to serve as per the requirement and support with its prompt and reliable customer service.

Since its inception, ECPL has vastly expanded its market base and today enjoys a position of repute amongst leading Organizations and Govt. Departments.

ECPL believes in a long-term relationship with all its customers and hence all is directed to achieve this objective, a proof to that is repeat response from its major clients.

A testimony to our dedicated quality services is the list of our work-orders (completed & current) from our valued clients, listed separately.



OUR STRENGTH

1

FAST MOBILISATION

possible time.

2

PLANNING & CONTROL

- Micro Level Planning of Manpower, Machinery & Materials Procurement.
- Effective Allocation & Utilization of Resources

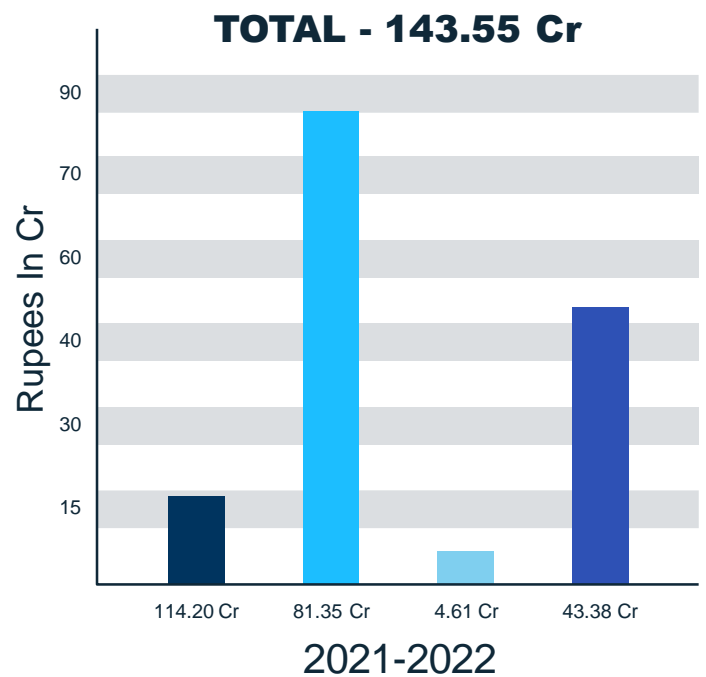
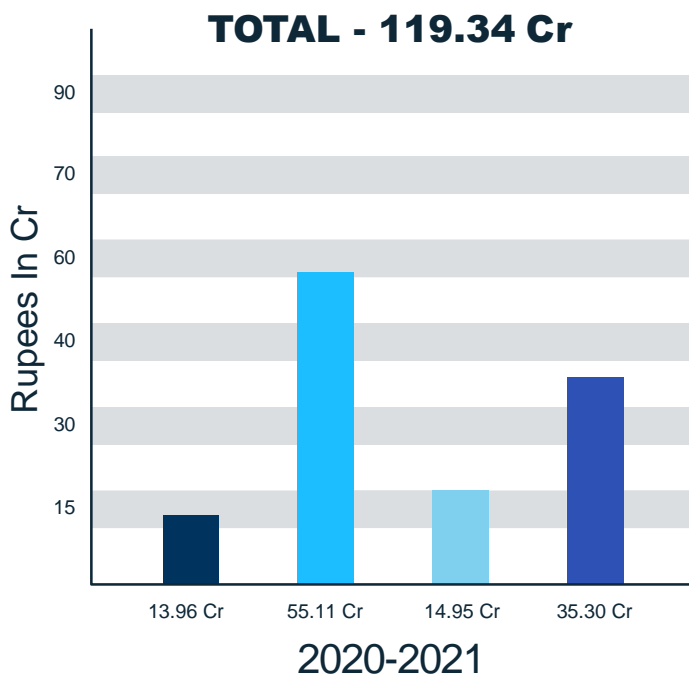
3

SUPERIOR QUALITY & QUALITY CONTROL ASSURANCE

- Fully Equipped In-House Laboratory.
- Stringent Quality Control Measures.
- Dedicated Personnel for QA/QC

FINANCIAL DATA

Sr no	Name	20-21	21-22	
1	RCC Road	149246493.00	13963914.00	
2	Bitumin Road	197592749.00	551121765.00	
3	Earth Work	76400000.00	149586264.00	
4	Logistic Road	398272668.00	353038635.00	
	Total	821511910.00	1193440578.00	



*In Partnership with RadheKrishna Infrastructure

MAN POWER LIST

Sr. No	Description	Person
1	PROJECT MANAGER	3 Nos.
2	MANAGER COMMERCIAL & FINANCE	1 Nos.
3	OFFICER PURCHASE	3 Nos.
4	Sr. ACCOUNTANT	1 Nos.
5	ACCOUNTS	4 Nos.
6	CIVIL ENGINEER	6 Nos.
7	SR. CIVIL ENGINEER	3 Nos.
8	CIVIL SUPERVISOR	14 Nos.
9	SR. CIVIL SUPERVISOR	2 Nos.
10	SAFETY SUPERVISOR	4 Nos.
11	SAFETY OFFICER	2 Nos.
12	CIVIL DRAFT MAN	2 Nos.
13	ADMIN OFFICER	2 Nos.
14	FOREMAN (P & M)	1 Nos.
15	STORE KEEPER	2 Nos.
16	ELECTRICIAN	3 Nos.
17	OFFICE ASSISTANT	4 Nos.

EQUIPMENT LIST

Sr. No	Description	Quantity
1	Appolo Asphalt Bachmix Plant C-100TPH	1 No.
2	Shakti Make DM Hot Mix Plant - 90-120TPH	1 No.
3	Bhagirath Make DM Hot Mix Plant - 90-120TPH	1 No.
4	Unipave Paver Finisher (Mechanical) - 5.5 Mtrs	1 No.
5	Unipave Paver Finisher (Sensor) - 7.5 Mtrs	1 No.
6	Fixed Form Concrete Paver with 100 Mtr. Rail - Mtrs	1 No.
7	Weigh Bridge 60 Ton	1 No.
8	JCB Backhoe Loader	3 Nos.
9	Soil Compact Roll L&T 1107	3 Nos.
10	Tandem Roll L&T 752 & Case 752	2 Nos.
11	Ajax Flori Argo 4000 Self Loading Mobile Concrete Mixer	3 No.
12	Dumpers	15 Nos.
13	Grades	2 No.
14	Kobelco Hydraulic Excavator	2 Nos.
15	RMC Plant 60 Cum/Hour	1 No.
16	RMC Plant 30 Cum/Hour	1 No.
17	Transit Mixer	10 Nos.
18	Crusher Plant 1 Day (200-250 MT)	1 No.
19	DG Set	4 Nos.
20	Boiler	2 Nos.
21	Tractor Mounted Water Tanker - 5000 Ltrs	3 Nos.
22	Tractor Mounted Water Tanker - 10000 Ltrs	3 Nos.

Sr. No	Description	Quantity
23	Mechanical Sprayer	1 No.
24	Surface Vibrator	5 Nos.
25	Needle Vibrator	5 Nos.
26	Shuttering & Centering	3000 Sqmtr
27	Tata Excavators	2 Nos.
28	Wheel Loader	10 Nos
29	Crawler Cranes	1 Nos
30	Tyre Mounted Crane	1 Nos
31	SURFACE MINER (L&T KSM 223)	2 Nos
32	DIESEL TANKER	2 Nos
33	TRACTOR	4 Nos
34	MIXTURE MACHINE	4 Nos
35	WELDING MACHINE 400AMP	2 Nos
36	AIR COMPRESSER	1 Nos
37	WATER SERVICE PUMP	2 Nos
38	BATTERY CHARGER	1 Nos
39	ARMATURE TESTER	1 Nos
40	WOOD CUTTING MACHINE	2 Nos
41	BAR BENDING MACHINE	2 Nos
42	BAR CUTTING MACHINE	2 Nos
43	WINCH MACHINE 100' Capacity	1 Nos
44	SIDE WAY ROLLER(VIBRATOR)	1 Nos
45	BRICK MAKING MACHINE	1 Nos
46	VIBRATOR (ELECT)	4 Nos
47	NIDDLE (60MM & 40MM)	15 Nos
48	Sensor Paver Machine	1 Nos

LAB TEST EQUIPMENTS

SR NO	DESCRIPTION	QNTY
1	CUBE TEST COMPRESSIVE MACHINE	3 NOS
2	CUBE MOULD	120 NOS
3	TEST OF SAND , AGGREGATE SLIVE ANALYSIS	3 SET
4	FLAKY ALONGATION	2 NOS
5	WEIGHT MACHINE	1 NOS
6	TEST OF SILT CONTENT BIKAR	1 NOS
7	SLUMP TEST MOULD	3 NOS
8	Compacting roads	3 NOS
9	Thermometer	20 NOS
10	Electronic weight balance	15 NOS
11	Impact testing	3 NOS
12	P.L. and I.L. value test machine	3 NOS
13	Core cutting tools	3 NOS
14	Ductility testing machine	3 NOS
15	Viscosity Testing Apparatus	3 NOS
16	Sample splitter	1 NOS
17	Aggregate Crushing Value Apparatus	1 NOS
18	Specific gravity And Water Absorption Of Aggregates	1 NOS
19	Climatic chambers aggregate testing	1 NOS

DETAILS OF WORKS EXECUTED

SL NO	NAME OF EMPLOYEE	NAME OF LOCATION & TYPE OF WORK	
1	Rajkot R&D	Smart City Project Raw Material Suppliers	
2	(L&T) RAJKOT Smart City Project RAJKOT	To RKI Structure And Building Work	
3	VIC PORT TO VICTOR	Pipavav Port Gujarat 2 KM VICTOR PORT	
4	Pipavav Port (L&T) RAJKOT Smart City Project	BRTS ROAD AND BRTS STAND	
5	Rajkot (L&T) RAJKOT Smart City Project Rajkot	WATER PIPE OF 14 KM	
6	(L&T) RAJKOT Smart City Project Rajkot	BOX CULVERT WITH PROPER DESIGN AND STRUCTURE	
7	(L&T) RAJKOT Smart City Project Rajkot	WATER STORAGE	
8	(L&T) RAJKOT Smart City Project Rajkot	DRAINAGE SYSTEM WITH STP	
9	(L&T) RAJKOT Smart City Project Rajkot	ROAD WITH FOOTPATH	
10	(L&T) RAJKOT Smart City Project Rajkot	CYCLE TRACK	

OUR SAFETY



The foundation of any successful workplace safety effort is one that encourages employees to identify unsafe behaviors and opportunities for improvement while also making well-informed safety decisions during daily routine tasks.

To build a safety culture aimed at continually reducing the frequency severity rate towards achieving zero accidents.

Providing A safely work environment to our employees.

Company give and take care of employees Personal Protective Equipment (PPE)

we are committed to ensuring the health and safety of our workforce and the people who live and work close to our projects

Appointment of safety personnel for the project and the formation of safety committee on site.

Review of specifications to identify appropriate safety standards and special safety conditions.

Hazard analysis.

Emergency and contingency plan for obtaining medical assistance, ambulance and direction for rescue operation.

Safety induction training for every worker, to make them aware of the safety rules & procedures.

Inspection, testing and certification of tools and equipment.

Display of safety signage caution boards and awareness posters.

Periodic safety inspection and compliance of observations.

Accident reporting and investigations.

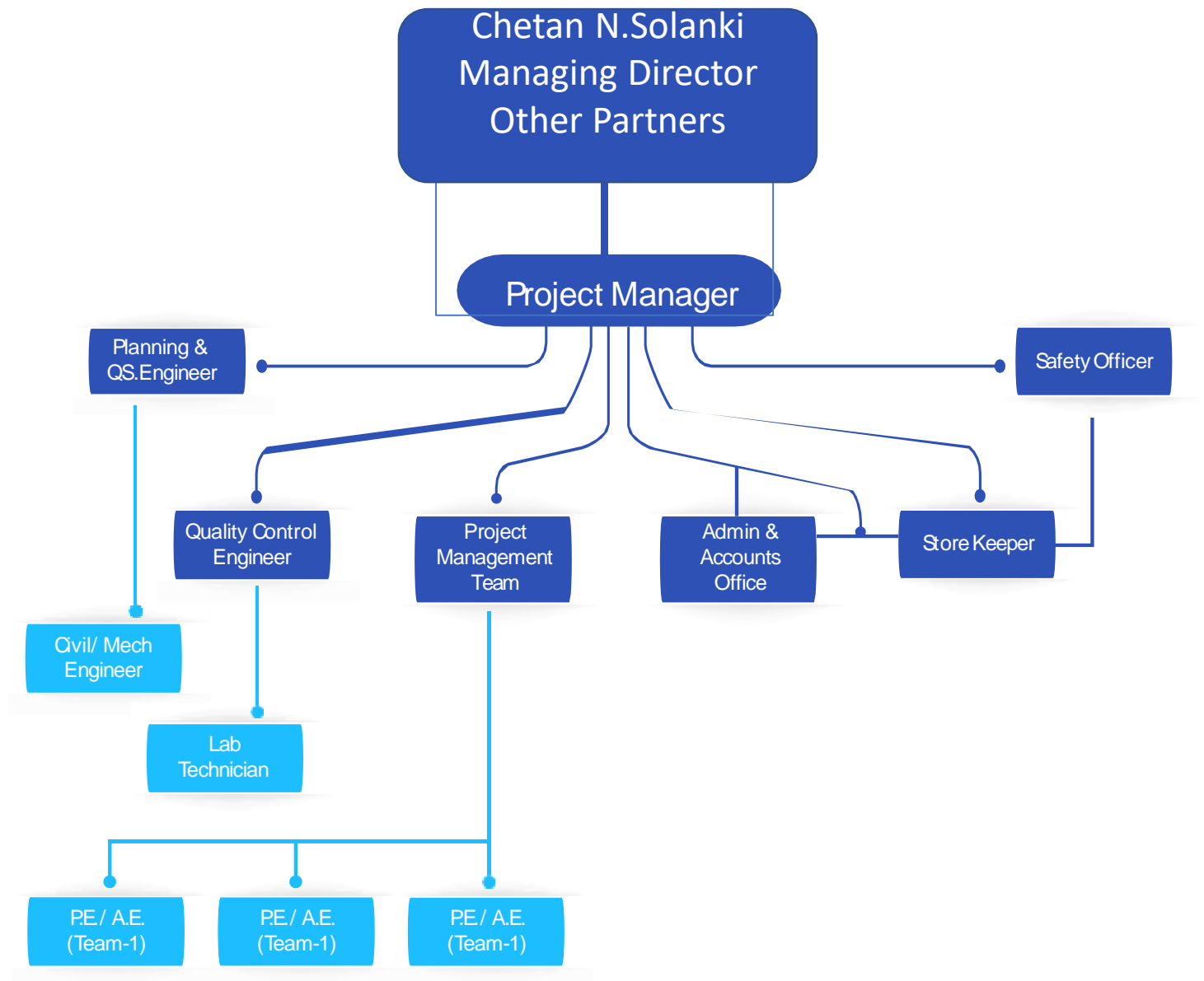
Analysis of accidents.

Safety audit and compliance.

OUR VALUABLE CLIENTS

- ☐ **LARSEA AND TOUBRO (L&T)**
- ☐ **RAJKOT R & B DIVISION (STATE)**
- ☐ **RADHEKRISHNA INFRASTRUCTURE**
- ☐ **ULTRATECH CEMENT KOVAYA**
- ☐ **SHRADHA CONSTRUCTION**
- ☐ **Govt OF GUJARAT R&B DEPARTMENT**

ORGANISATION CHART





WATER STORAGE L&T RAJKOT



**DRAINAGE SYSTEM
WITH STP L&T RAJKOT**



VICTOR PORT TO VICTOR



**BRTS ROAD AND
BRTS STAND
RAJKOT L&R**



BOX CULVERT (L&T)



Structure And Building Work



STP FOR L&T RAJKOT



SMART CITY ROAD (L&T) RAJKOT



- **Head Office:**

Ethiraj House ,Near Nayra Petrol Pump Veraval-Jungadh
Baypass ,Tel:Veraval Dist:Gir Somnath :362265

- Tele: 7273072737

- Web: www.ethirajcpl.com

- Email: ethirajcpl@gmail.com

- OWNER:Chetan Solanki (9073488888) & Partners

- **Branch Office:**

- RAJKOT • RAJULA